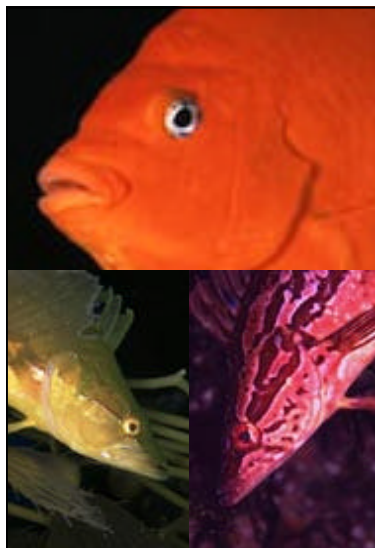


CREATING THE FUTURE

m a g a z i n e



Introduction

Another month has gone by and we have more news for you! Read up on the latest Ocean REEF **NEW PRODUCT!** Also be sure to read about the exciting and fun Shield Display Simulator online, the underwater wedding, Catalina Island shark diving, & the 2004 AKAKOR expedition in South America! Don't miss the coupon's, promotions, and trivia challenge! Let us know how you like this issue! advertising@oceanreefgroup.com

SMALL/MEDIUM Full Face Mask Promotion!!

Purchase 4 MEDIUM/LARGE (original size) Full Face Masks and get a new SMALL/MEDIUM Full Face Mask for FREE!

***Purchase 4 MEDIUM/LARGE Neptune Kits, get a SMALL/MEDIUM Kit FREE!**

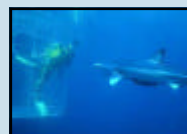
Places to Dive

Catalina Island's naturally clean and clear waters, abundant marine life, giant kelp forests, and diver-friendly services have made the island one of the top dive destinations in the world. If you like to get involved in service, you may be interested in this... Each year in February, as many as 500 divers attend the Annual Avalon Harbor Underwater Clean-up. This is the only day of the year scuba diving is permitted in Catalina Island's beautiful Avalon Bay!

If you are more interested in just enjoying the unique diving of Catalina then let me inform you of what Catalina offers. As was mentioned before, Catalina diving offers vast kelp forests. Along with that you may also see schooling halibut, torpedo rays, bat rays, horn sharks, and possibly a bright orange Garibaldi, the official state marine fish (at the diving spots of Pirates Cove, the

Italian Gardens, and Casino Point). Farnsworth Bank is a must-do spot considering it is one of the few places in the world where purple hydra-coral grows. This open ocean deep water pinnacle comes up from 200 foot plus depth to within 50 feet of the surface. With amazing visibility and an abundance of marine life, this is a must-do dive.

If that is not daring enough for you, you may want to consider shark diving! There are some great southern California shark diving excursions. <http://www.psaltyadventures.com/sharkdive.htm> During your dive off Catalina you can take a try at chumming and bringing in your own sharks! (blue sharks, mako sharks, and leopard sharks!) Don't worry about the sharks; you'll be very safe in a cage. You could make your own "JAWS" video! Consider diving at Catalina Island!



| CONTENTS | |
|-----------------------|---|
| Introduction | 1 |
| Places to Dive | 1 |
| Trivia Challenge | 1 |
| Technical Information | 2 |
| Exciting News | 2 |
| Product Highlight | 3 |
| Did you know? | 3 |
| Employee Highlight | 3 |
| Upcoming Events | 4 |
| Diving Tip | 4 |

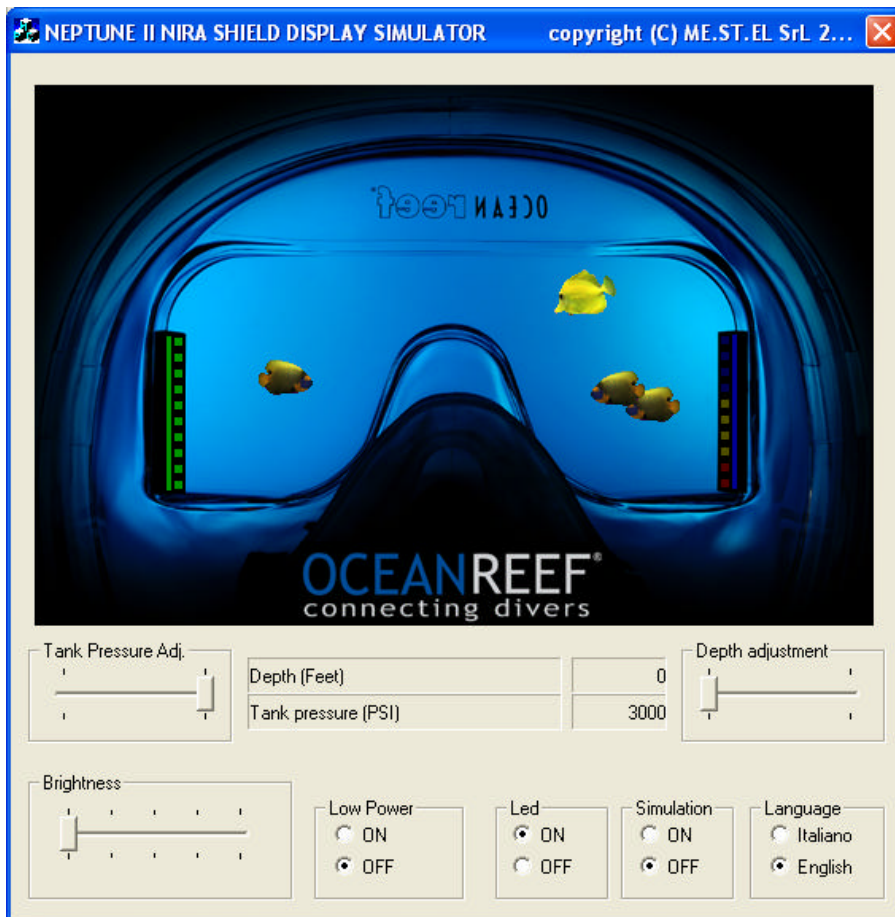
Trivia Challenge

The first five people to email the correct answer of the trivia question to: advertising@oceanreefgroup.com will receive a \$5.00 Starbucks gift certificate!

Trivia Question:

What are the four ways that exhaust can be directed from the mask?

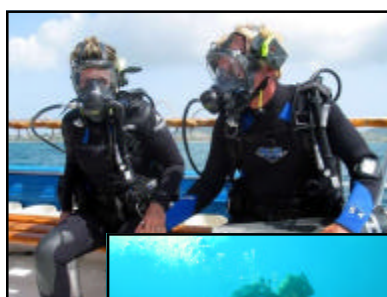
1699 La Costa Meadows Drive Suite 101 | San Marcos, CA 92078 | USA
Ph: 1-760-744-9430 | Fax: 1-760-744-9525 | Toll Free: 1-800-922-1764
operator@oceanreefgroup.com



Technical Information

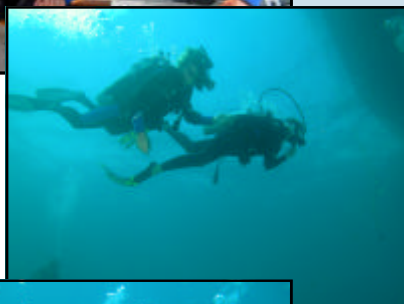
When it comes to full face masks and technology, Ocean REEF is cream of the crop! Inspired by fighter pilot head displays, the Shield Display allows divers to obtain critical depth and air pressure information with one glance.

The Shield Display consists of 2 LED color displays stuck to the inside of the face shield (depth displayed on the right and tank pressure displayed on the left) and connected to the mask through the regulator/octopus port. Supplied with a quick connector, the main electronic unit mounts easily to the tank strap of the BC. The high pressure hose from the regulator first stage plugs into the main unit, which also has a depth sensor. The Shield Display turns on automatically when submerged in water. The main unit connects to the BC Tank Strap. Brightness may be adjusted by a switch located on the "Electronic Connection Surface Air Valve" (which comes with the Shield Display). As a safety measure, it will turn on automatically if the tank pressure is low and/or the depth is 40 meters/120 feet or greater. Experience the Shield Display first hand! ***Download the simulator off our website!!** www.oceanreefgroup.com



Exciting News

Ocean REEF assisted a couple celebrating their 10-year anniversary with a ceremony under the sea off the coast of St. Croix!



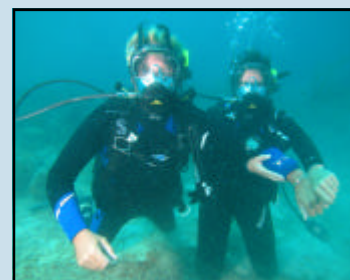
Ed and Molly Buckley, the owners of St. Croix Ultimate Blue-water Adventures in St. Croix decided to have a memorable 10-year anniversary by having Captain John Macy, better known locally as Big Beard, officiate an underwater ceremony. Big Beard has married more than 500 couples in more than 15 years as a licensed minister on St. Croix. Witnesses of underwater weddings sign the marriage license, while still underwater, with a grease pencil on a waterproof document.

Ocean REEF provided special gear used for the underwater ceremony. The

underwater wedding was a success!! The night after the wedding, the couple had a party. During the party, the video (with sound) of the wedding was played. The couple had a lovely time and has lots of pictures to remember the special event. Congratulations Ed and Molly!!

The photography was done by Doug Kaufman

To see more still shots or for more information visit www.GoToStCroix.com



Product Highlight

The moment everyone has been waiting for is here... the SMALL/MEDIUM Full Face Mask has arrived!!

In the past, we have provided a mask of a certain size, a size that fits about 80% of the population. Ocean REEF recently created another full face mask size to fit more of the population. The original Neptune II NIRA full face mask will now be referred to as the MEDIUM/LARGE full face mask. The new Neptune II NIRA full face mask will be referred to as the SMALL/MEDIUM full face mask. The pricing for SMALL/MEDIUM full face masks will be the same as for the MEDIUM/LARGE full face masks. In order to know whether a customer should wear a MEDIUM/LARGE mask or SMALL/MEDIUM mask, Ocean REEF is providing a FREE package, on request, to distributors. It will include a measuring tool (caliper), a Full Face Mask Size Recommendation Chart, and measuring directions. **Call Ocean REEF & request this package today! 1-800-922-1764**



Did you know?

Ocean REEF is involved with and supporting the **AKAKOR GEOGRAPHICAL EXPLORING** Association (AGEA), a non-governmental non-profit organization founded in 1992! Their philosophy is to produce scientific research involving professionals from many countries with the objective of protecting and making the most of the environment, nature, artistic and historical heritage.

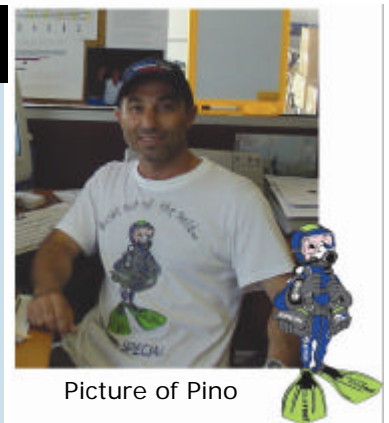
In August, the AGEA are performing an expedition which will start from **San Paolo** (Brazil) to **La Paz** (Bolivia), passing through Corumbà, Porto Suarez, Santa Cruz de la Sierra and Cochabamba. They will study underwater activities between systematic explorations, bathymetry reliefs, archaeological and geologic studies. They will also collect topographical and bathymetry data, through reliefs and documentary films. Ocean REEF has provided equipment to the group and is excited to be a part of this adventure!

Employee Highlight

Pino Campisi works in the Ocean REEF Headquarters in Genoa, Italy. He is the Italian and European Customer Service Manager.

Pino was born in San Pietro di Caridà (RC) Italy in 1960. He is married and he has an 11 year old son and a 22 year old daughter. In 1985 he joined the Ocean REEF family. He has about 20 years of experience in this field. He has always been a hard worker and very productive with projects, customer service, prototypes, engineering and clever solutions which are the reasons his nickname is "SUPER PIN". Ocean REEF has now created a gadgets line including stickers, keyrings and t-shirts with the "Super Pin" symbol.

Pino enjoys bricolage, football, and diving. He has been scuba diving in the Red Sea, off the San Diego coast, Lago di Garda, Lago di Lavarone, and Dutch Springs. He loves to travel and someday he would like to visit Australia. Pino is a hard worker and Ocean REEF is glad to have him as part of the team. **THANKS** for all you do PINO!



Picture of Pino



The AGEA Expedition Crew

